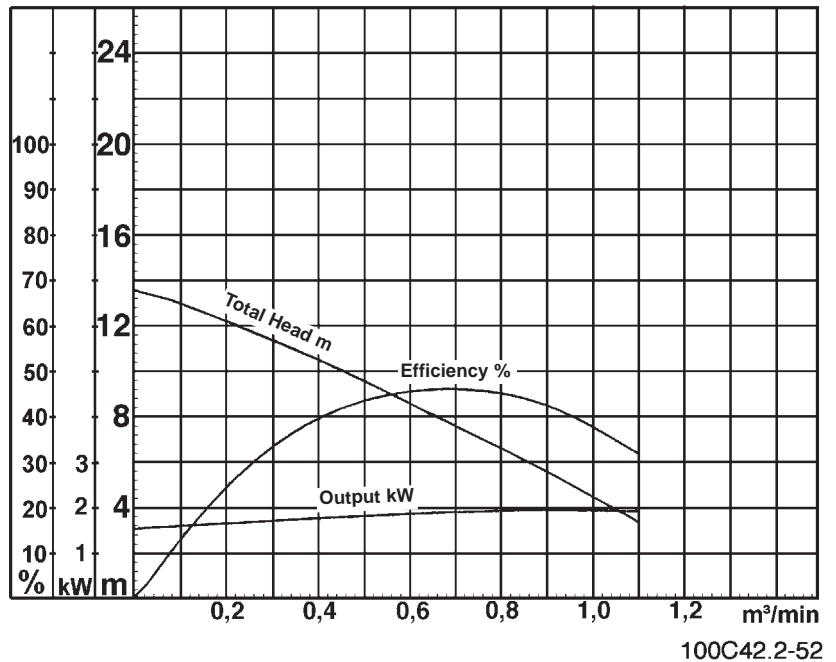
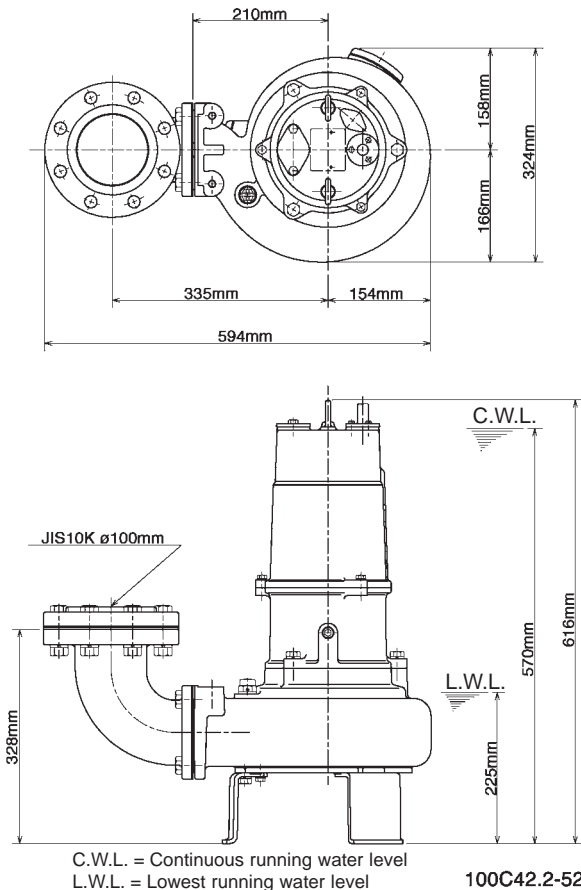


Data Sheet 100C42.2-52



Classification

Electric submersible pump
Protection class IP68
Depth of submersion max. 30m
1-channel impeller, non-clogging type with cutter mechanism
Impeller passage 44mm
Suitable for waste water and liquids carrying waste and solid matters

Electric Motor

Dry-type submersible induction motor,
Insulation class E, 4 poles, 1420 r.p.m.
Direct on line start
Voltage: 400V, 50Hz, 3-phase
Power input: 2,85kW
Power output: 2,20kW
Nominal current: 5,0A
Start current: 32,0A

Electric Cable

10m H07RN-F 4Cx1,5mm²

Motor Protection

Circle thermal protector
(snap-action bi-metal device)

Shaft Seal

Double mechanical seal in oil bath
additional lubrication by oil lifting device
Primary Seal:
silicon carbide on silicon carbide
Secondary Seal:
ceramic on carbon

Bearings

Shielded ball bearings, maintenance-free

Materials

Impeller:	FC200 (EN-GJL-200) with sintered tungsten carbide alloy tip
Casing:	FC200 (EN-GJL-200)
Suction Cover:	FCD700 (EN-GJS-700-2)
Motor frame:	FC200 (EN-GJL-200)
Shaft:	SUS420J2 (EN X30Cr13)

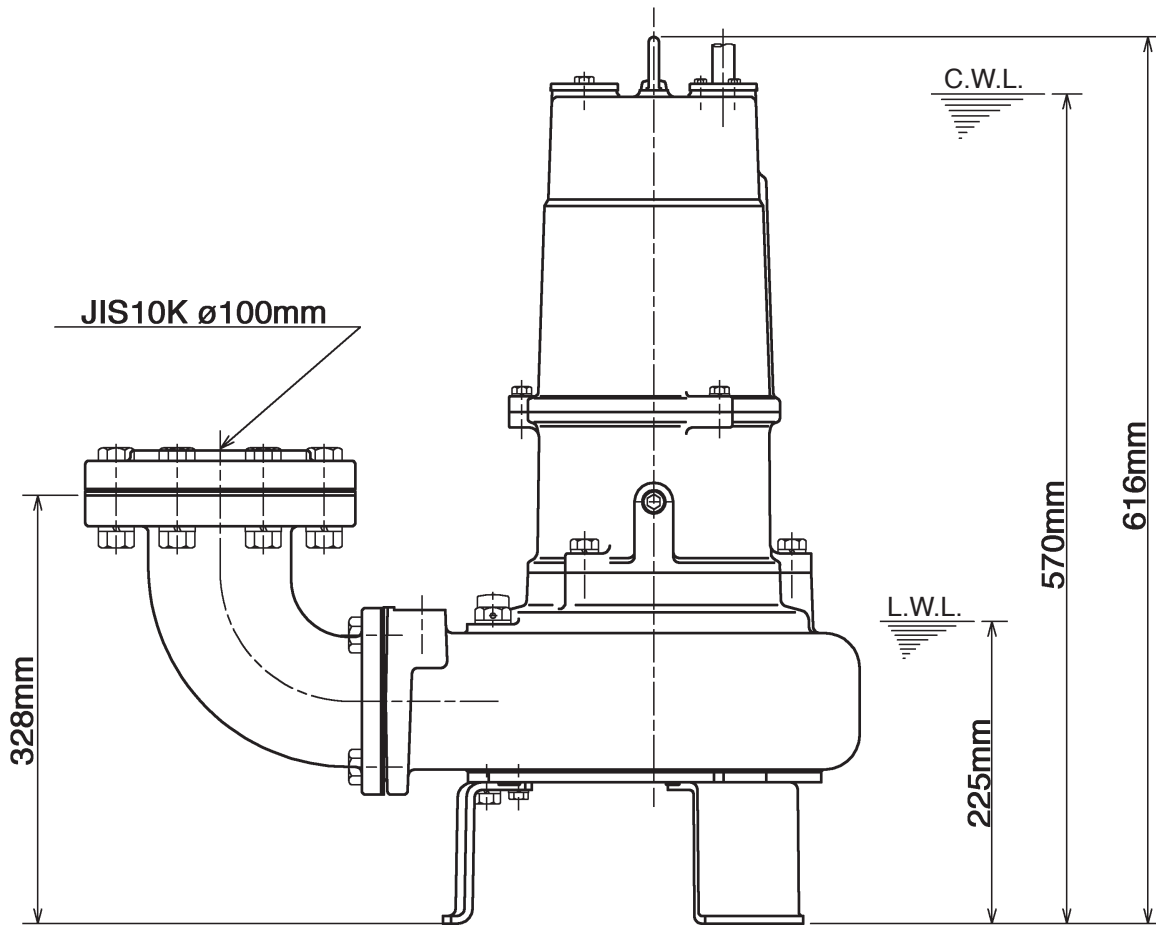
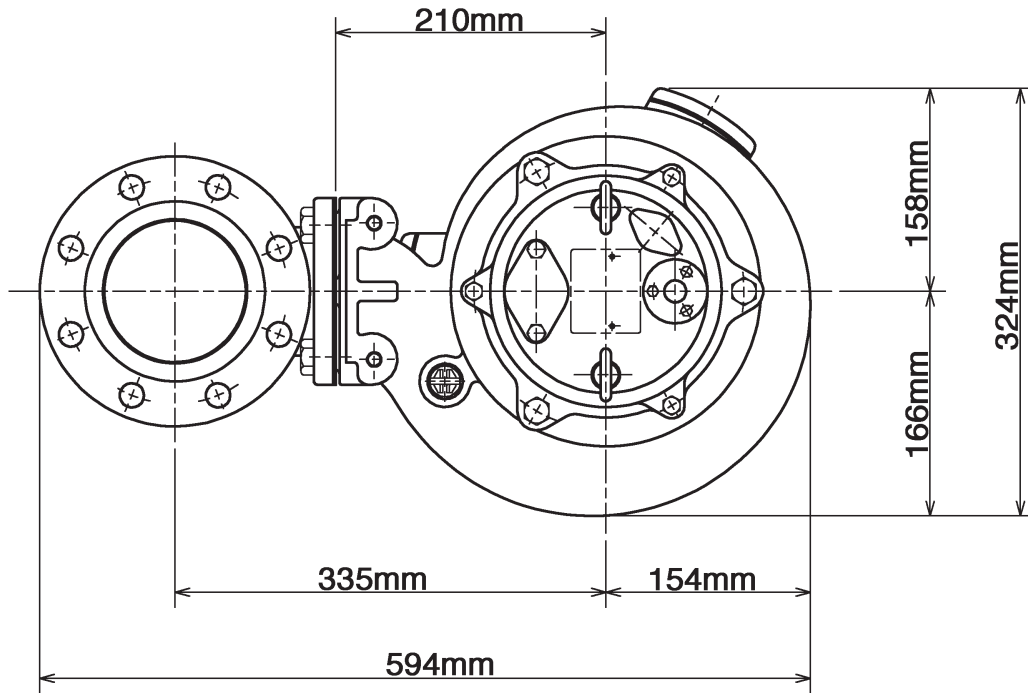
Discharge Connection

4" (100mm) JIS10K screwed-in mating flange
Guide rail fitting optional

Weight

70 kg (dry weight of the pump without cable)

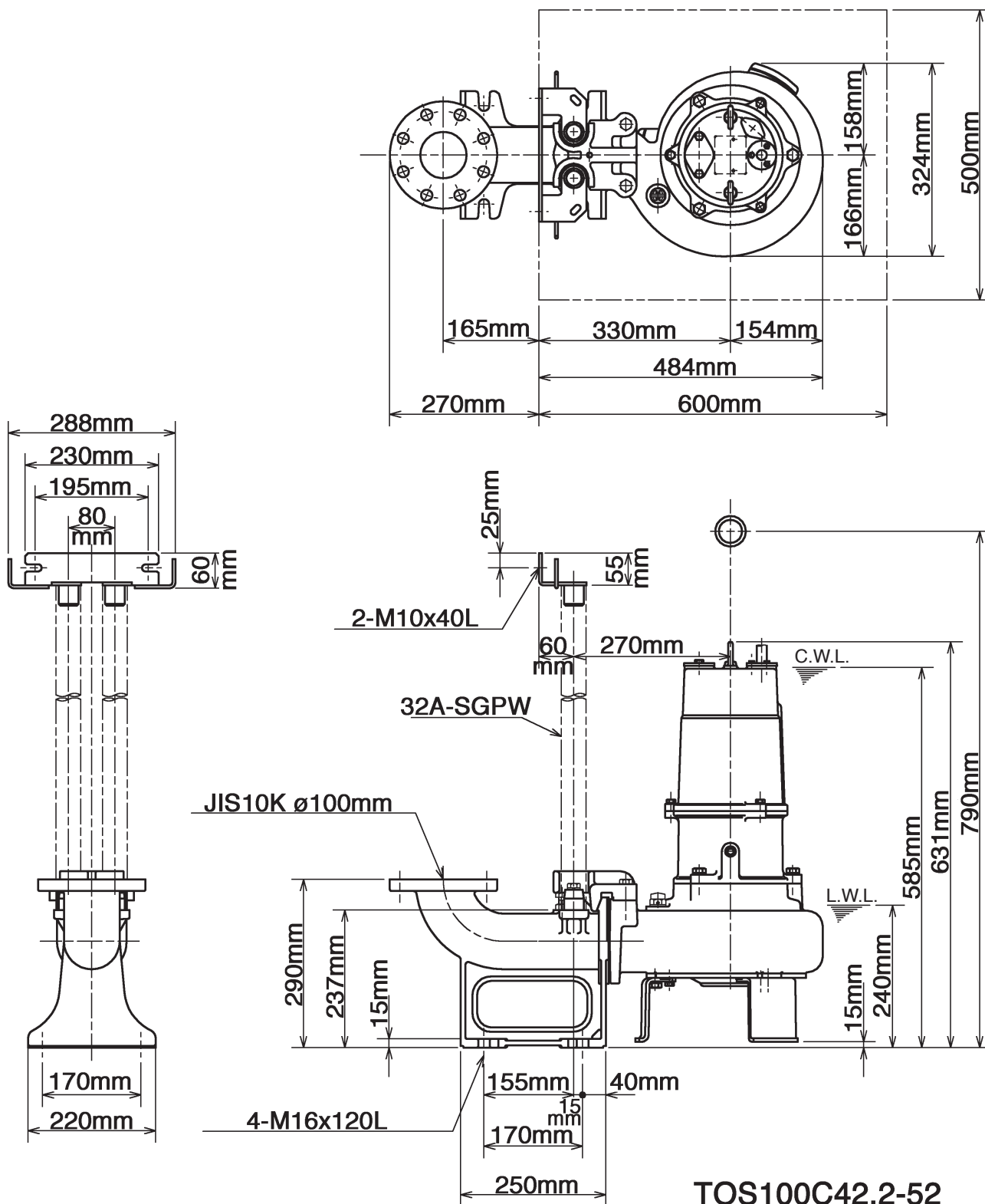
Dimensional Drawing 100C42.2-52



CWL: Continuous Running Water Level
LWL: Lowest Running Water Level

100C42.2-52

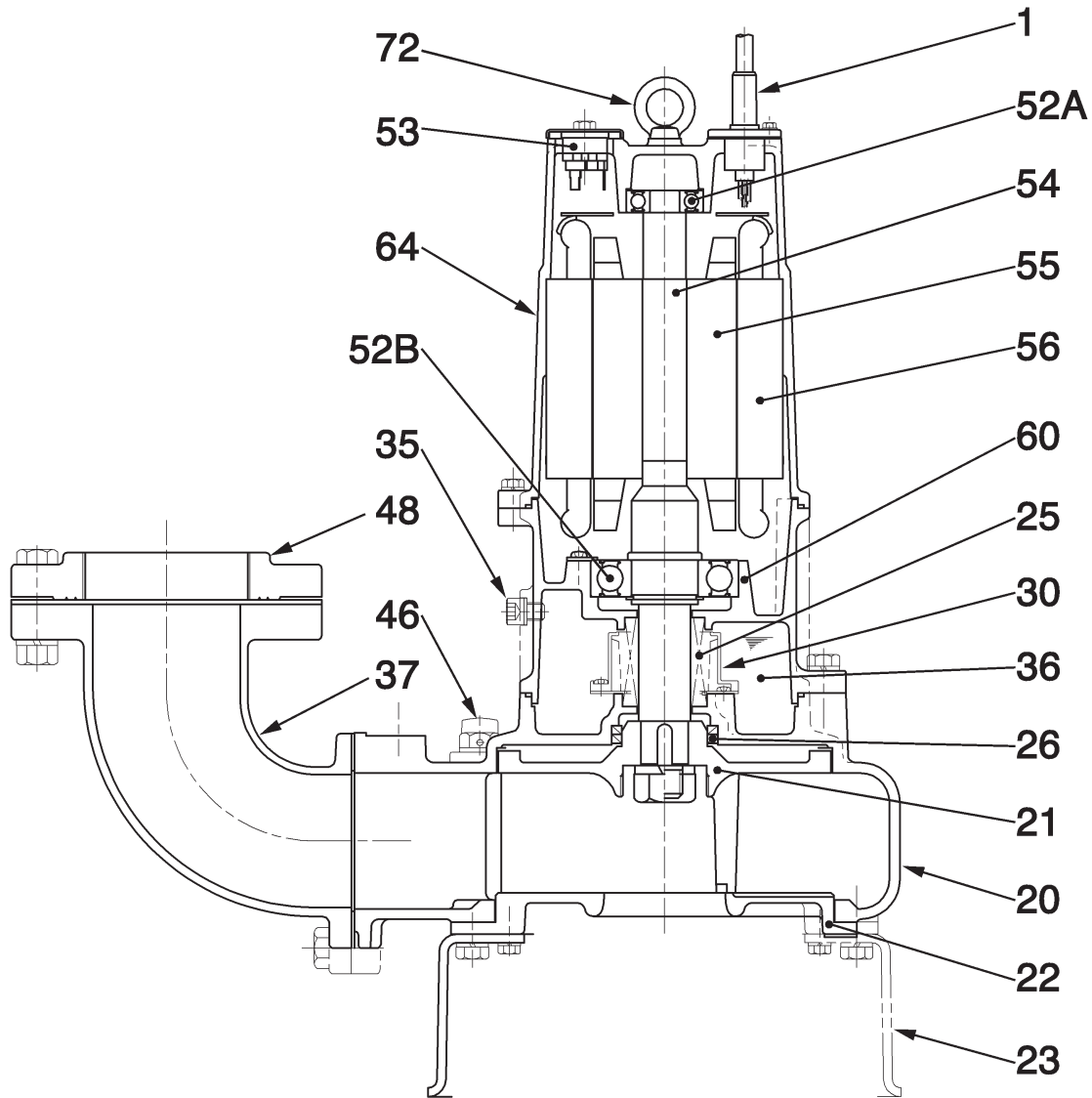
Dimensional Drawing TOS100C42.2-52



TOS100C42.2-52

CWL: Continuous Running Water Level
 LWL: Lowest Running Water Level

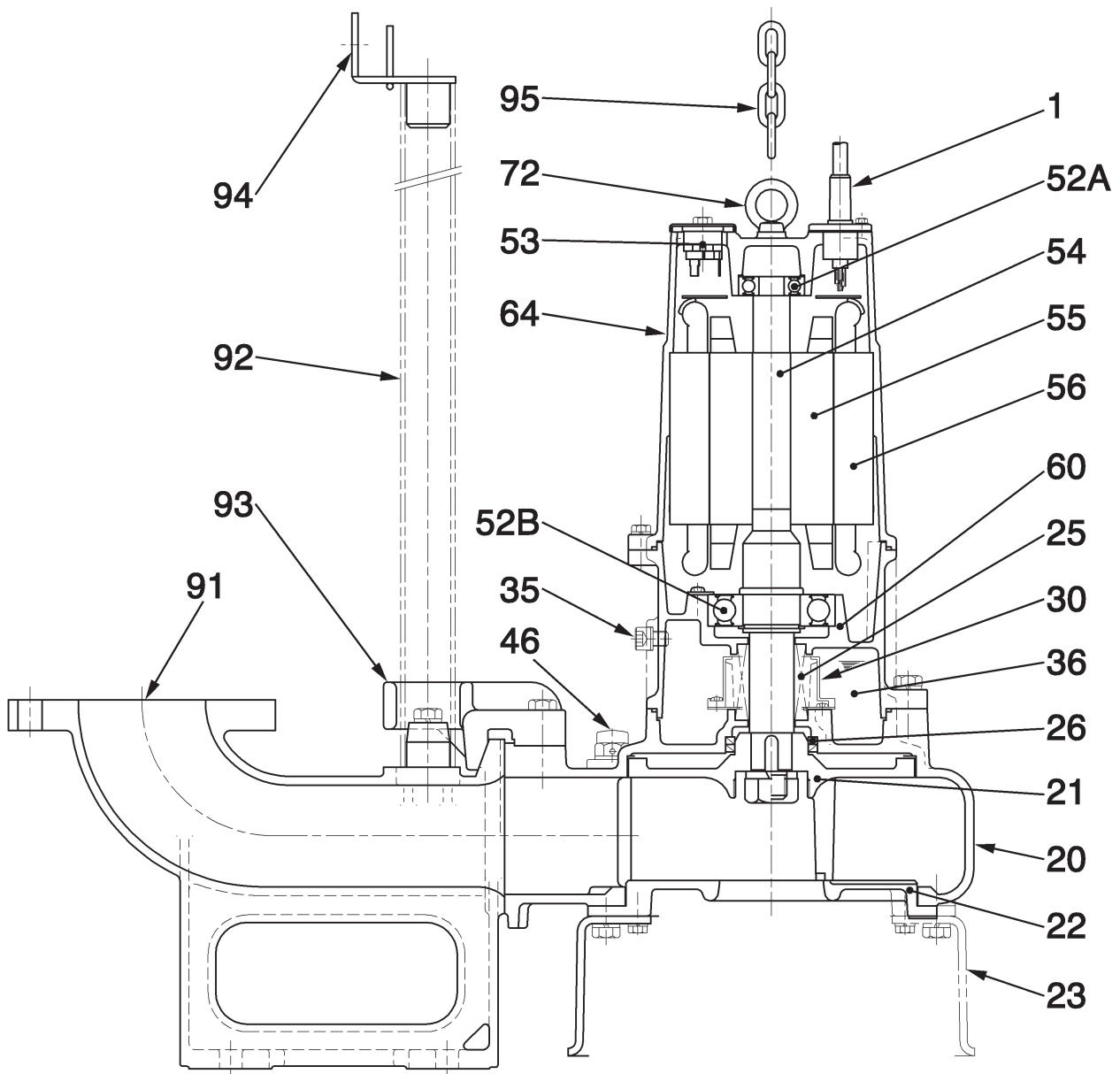
Sectional Drawing 100C42.2-52



100C42.2-52

No.	Description	Qty.	Remarks	No.	Description	Qty.	Remarks
1	Cabtyre Cable	1	H07RN-F	52B	Lower Bearing	1	6307ZZC3
20	Pump Casing	1	FC200 (EN-GJL-200)	53	Motor Protector	1	
21	Impeller	1	FC200 (EN-GJL-200)+Tungsten Carbide	54	Shaft	1	SUS420J2 (EN-X30Cr13)
22	Suction Cover	1	FCD700 (EN-GJS-700-2)	55	Rotor	1	
23	Stand	3	SS400 (DIN 1.0040)	56	Stator Complete	1	
25	Mechanical Seal	1	H-30A	60	Bearing Housing	1	FC200 (EN-GJL-200)
26	Oil Seal	1	TC-456812	64	Motor Frame	1	FC200 (EN-GJL-200)
30	Oil Lifter	1	Plastic	72	Eye Bolt	2	SUS304 (EN-X5CrNi18-10)
35	Oil Plug	1	SUS304 (EN-X5CrNi18-10)				
36	Lubricant		Turbine Oil (ISO VG32)				
37	Discharge Bend	1	FC200 (EN-GJL-200)				
46	Air Release Valve	1	Nylon				
48	Screw Flange	1	FC200 (EN-GJL-200)				
52A	Upper Bearing	1	6304ZZC3				

Sectional Drawing TOS100C42.2-52



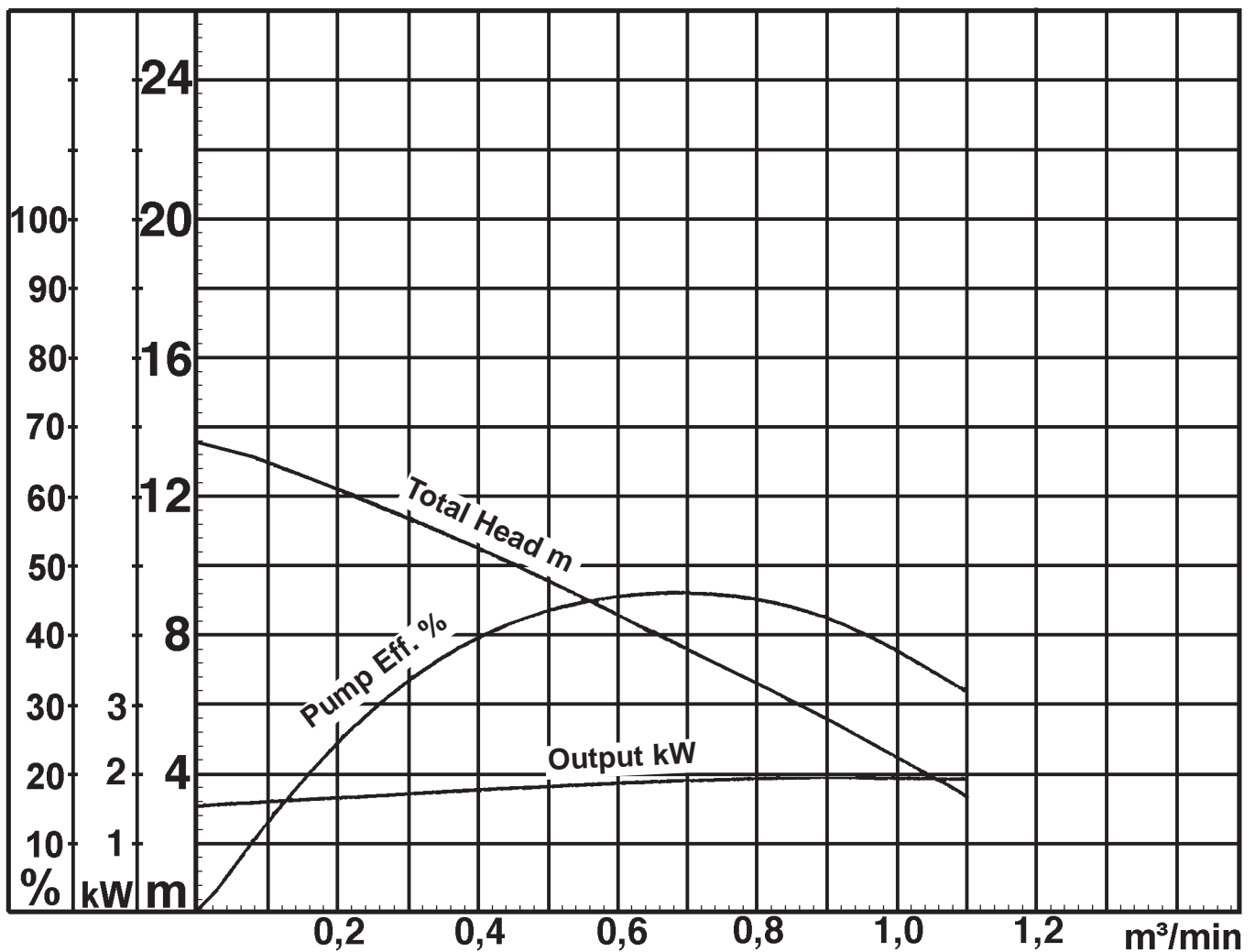
TOS100C42.2-52

No.	Description	Qty.	Remarks	No.	Description	Qty.	Remarks
1	Cabtyre Cable	1	H07RN-F	54	Shaft	1	SUS420J2 (EN-X30Cr13)
20	Pump Casing	1	FC200 (EN-GJL-200)	55	Rotor	1	
21	Impeller	1	FC200 (EN-GJL-200)+Tungsten Carbide	56	Stator Complete	1	
22	Suction Cover	1	FCD700 (EN-GJS-700-2)	60	Bearing Housing	1	FC200 (EN-GJL-200)
23	Stand	3	SS400 (DIN 1.0040)	64	Motor Frame	1	FC200 (EN-GJL-200)
25	Mechanical Seal	1	H-30A	72	Lifting Eye Bolt	2	SUS304 (EN-X5CrNi18-10)
26	Oil Seal	1	TC-456812	91	Duck Foot Bend	1	FC200 (EN-GJL-200)
30	Oil Lifter	1	Plastic	92	Guide Pipe (Option)	2	Galvanized Steel Pipe SGPW
35	Oil Plug	1	SUS304 (EN-X5CrNi18-10)	93	Guide Hook	1	FCD450 (EN-GJS-450-10)
36	Lubricant		Turbine Oil (ISO VG32)	94	Guide Support	1	SUS304 (EN-X5CrNi18-10)
46	Air Release Valve	1	Nylon	95	Lifting Chain	1	SS400 (DIN 1.0040)
52A	Upper Bearing	1	6304ZZC3				
52B	Lower Bearing	1	6307ZZC3				
53	Motor Protector	1					

Pump Performance Curve

100C42.2-52

Discharge Bore	100 mm
Total Head	8,0 m
Capacity	0,65 m ³ /min
Motor Output	2,20 kW
Motor Input	2,85 kW
Phase	3
Voltage	400 V
Frequency	50 Hz
Rated Current	5,0 A
Starting Current	32,0 A
Poles	4
Revolution	S.S. 1420 r.p.m.
Starting Method	direct on line
Insulation Class	E



100C42.2-52