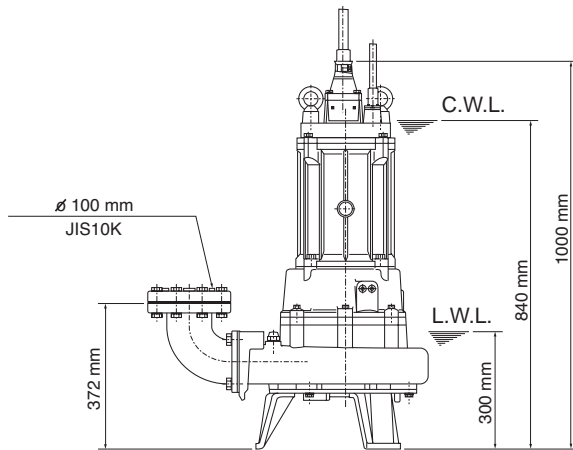
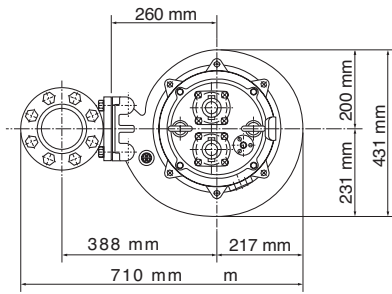
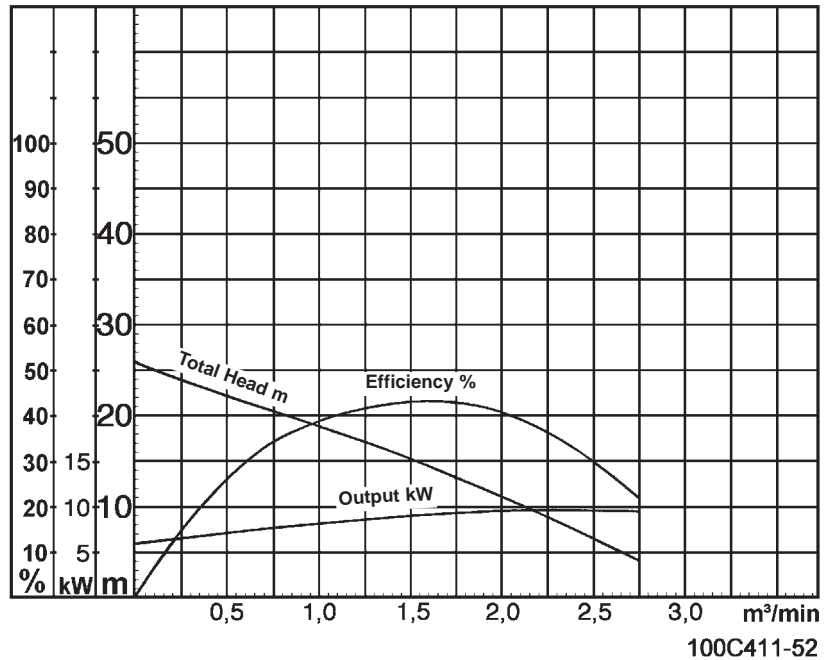


Data Sheet 100C411-52



C.W.L. = Continuous running water level
L.W.L. = Lowest running water level

100C411-52



100C411-52

Classification

Electric submersible pump
Protection class IP68
Depth of submersion max. 40m
1-channel impeller, non-clogging type with cutter mechanism
Impeller passage 50mm
Suitable for waste water and liquids carrying waste and solid matters

Electric Motor

Dry-type submersible induction motor,
Insulation class F, 4 poles, 1445 r.p.m.
Star / delta start
Voltage: 400V, 50Hz, 3-phase
Power input: 13,6kW
Power output: 11,0kW
Nominal current: 23,8A
Start current: 128,0A

Electric Cable

10m 4Cx2,5mm²/3Cx2,5mm²/2Cx1,25mm²

Motor Protection

Miniature protector in windings
(snap-action bi-metal device)

Shaft Seal

Double mechanical seal in oil bath
additional lubrication by oil lifting device

Primary Seal:

silicon carbide on silicon carbide

Secondary Seal:

silicon carbide on silicon carbide

Bearings

Shielded ball bearings, maintenance-free

Materials

Impeller: FC200 (EN-GJL-200) with sintered tungsten carbide alloy tip
Casing: FC200 (EN-GJL-200)
Suction Cover: FCD700 (EN-GJS-700-2)
Motor frame: FC200 (EN-GJL-200)
Shaft: SUS403 (EN X6Cr13)

Discharge Connection

4" (100mm) JIS10K screwed-in mating flange
Guide rail fitting optional

Weight

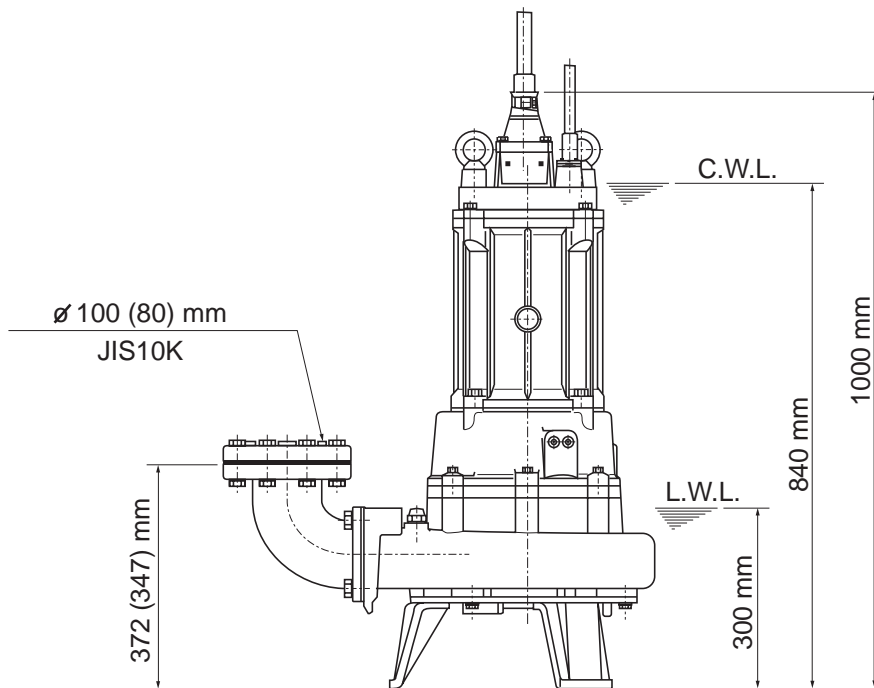
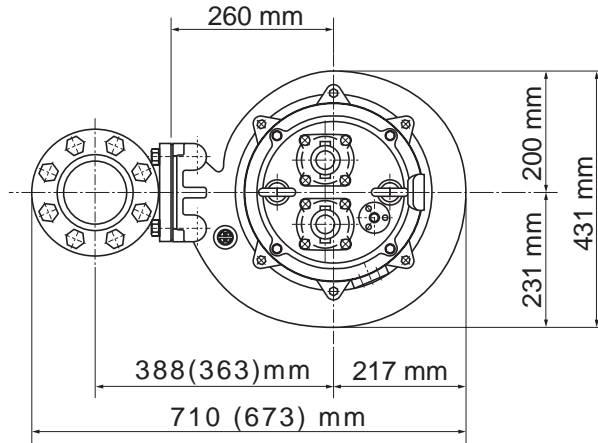
184 kg (dry weight of the pump without cable)



Tsurumi Europe GmbH
11.07.2008

Heltorfer Str.14 • 40472 Düsseldorf • Germany
Tel.: +49-211-4179373 • Fax: +49-211-4791429
Sales@tsurumi-europe.com • www.Tsurumi-Europe.com

Dimensional Drawing 100C411-52

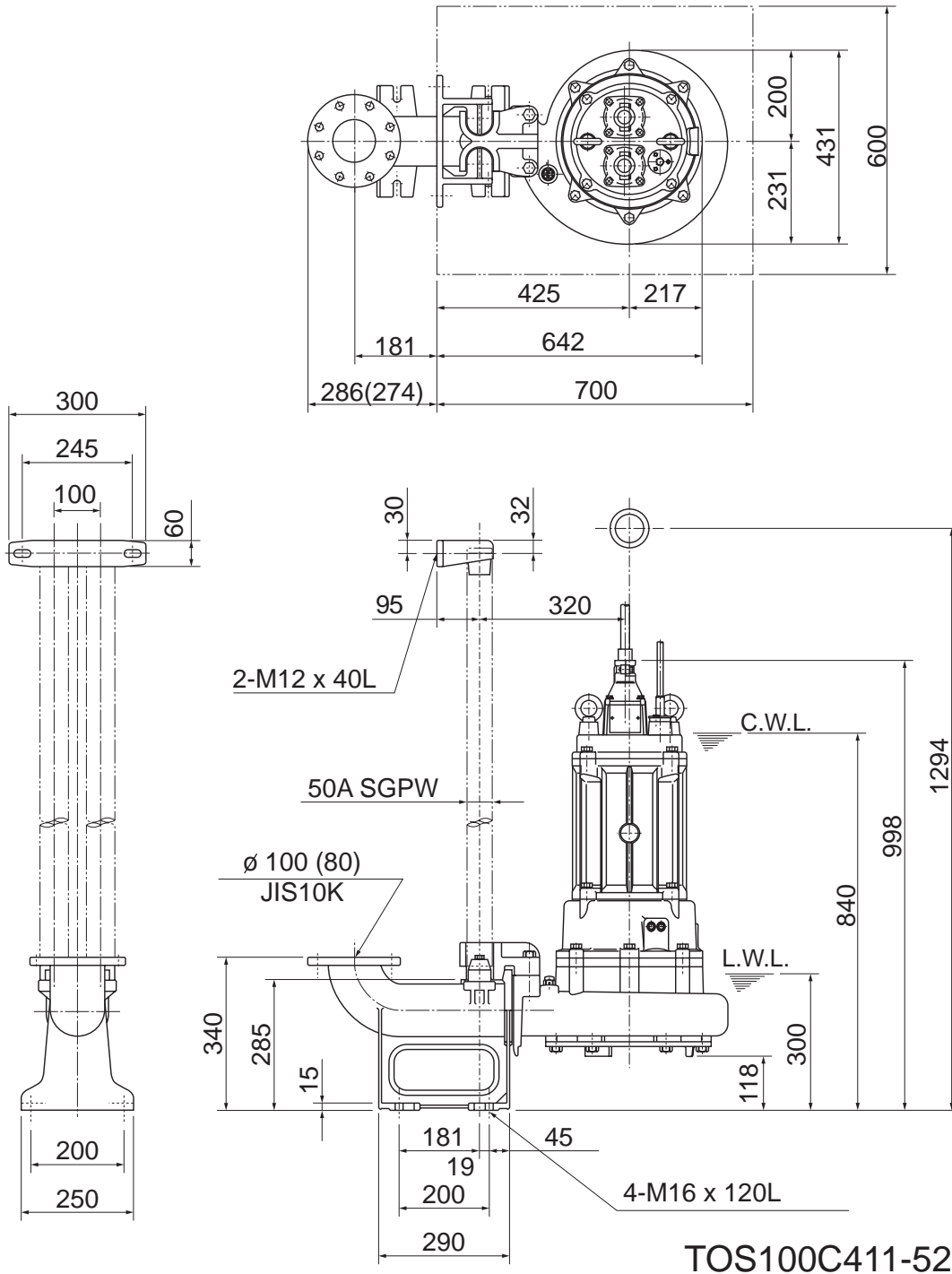


100C411-52

CWL: Continuous Running Water Level
LWL: Lowest Running Water Level

Dimensional Drawing TOS100C411-52

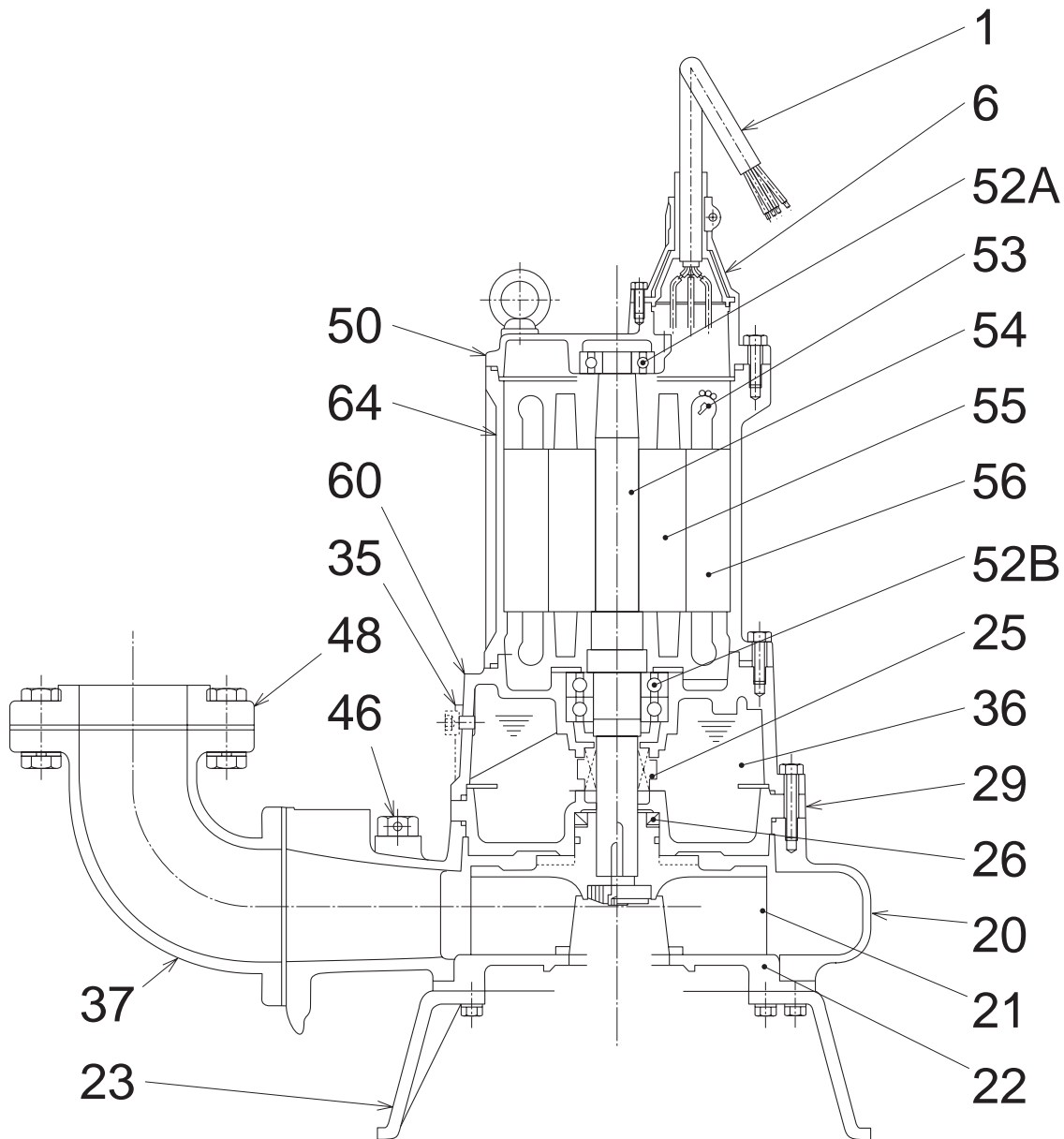
Dimensions in mm



TOS100C411-52

CWL: Continuous Running Water Level
LWL: Lowest Running Water Level

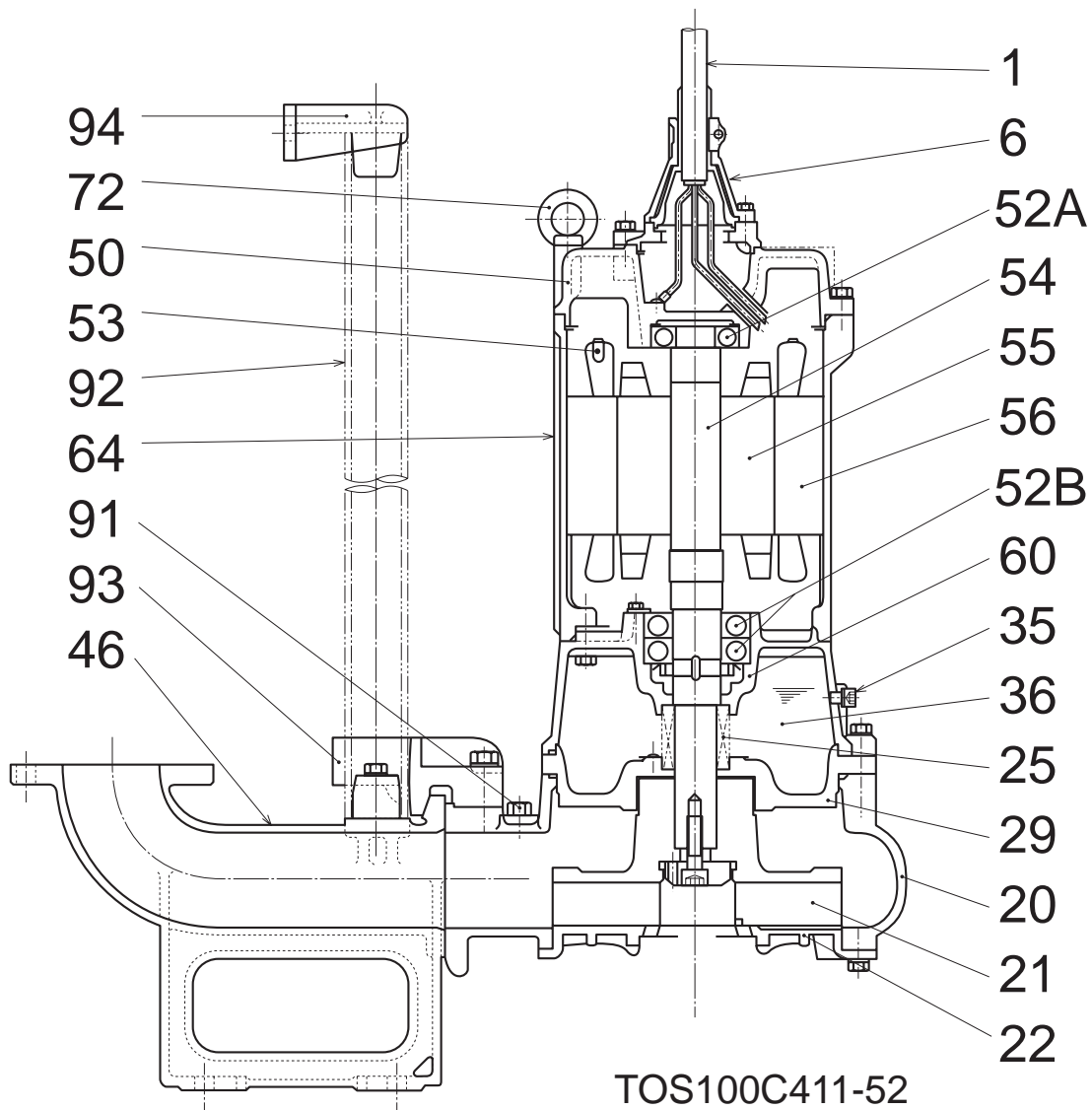
Sectional Drawing 100C411-52



100C411-52

No.	Description	Qty.	Remarks	No.	Description	Qty.	Remarks
1	Cabtyre Cable	3	H07RN-F / 2PNCT-F	52B	Lower Bearing	1	6310ZZD2C3
6	Stuffing Box	1	FC200 (EN-GJL-200)	53	Motor Protector	1	
20	Pump Casing	1	FC200 (EN-GJL-200)	54	Shaft	1	SUS403 (EN-X6Cr13)
21	Impeller	1	FC200 (EN-GJL-200)+Tungsten Carbide	55	Rotor	1	
22	Suction Cover	1	FCD700 (EN-GJS-700-2)	56	Stator	1	
23	Stand	3	FC200 (EN-GJL-200)	60	Bearing Housing	1	FC200 (EN-GJL-200)
25	Mechanical Seal	1	H-40	64	Motor Frame	1	FC200 (EN-GJL-200)
26	Oil Seal	1	TC-709212	72	Eye Bolt	2	SS400 (DIN 1.0040)
29	Oil Casing	1	FC200 (EN-GJL-200)				
35	Oil Plug	2	SUS304 (EN-X5CrNi18-10)				
36	Lubricant		Turbine Oil (ISO VG32)				
37	Discharge Bend	1	FC200 (EN-GJL-200)				
46	Air Release Valve	1	Nylon				
48	Screwed Flange	1	FC200 (EN-GJL-200)				
50	Motor Bracket	1	FC200 (EN-GJL-200)				
52A	Upper Bearing	1	6306ZZC3				

Sectional Drawing TOS100C411-52



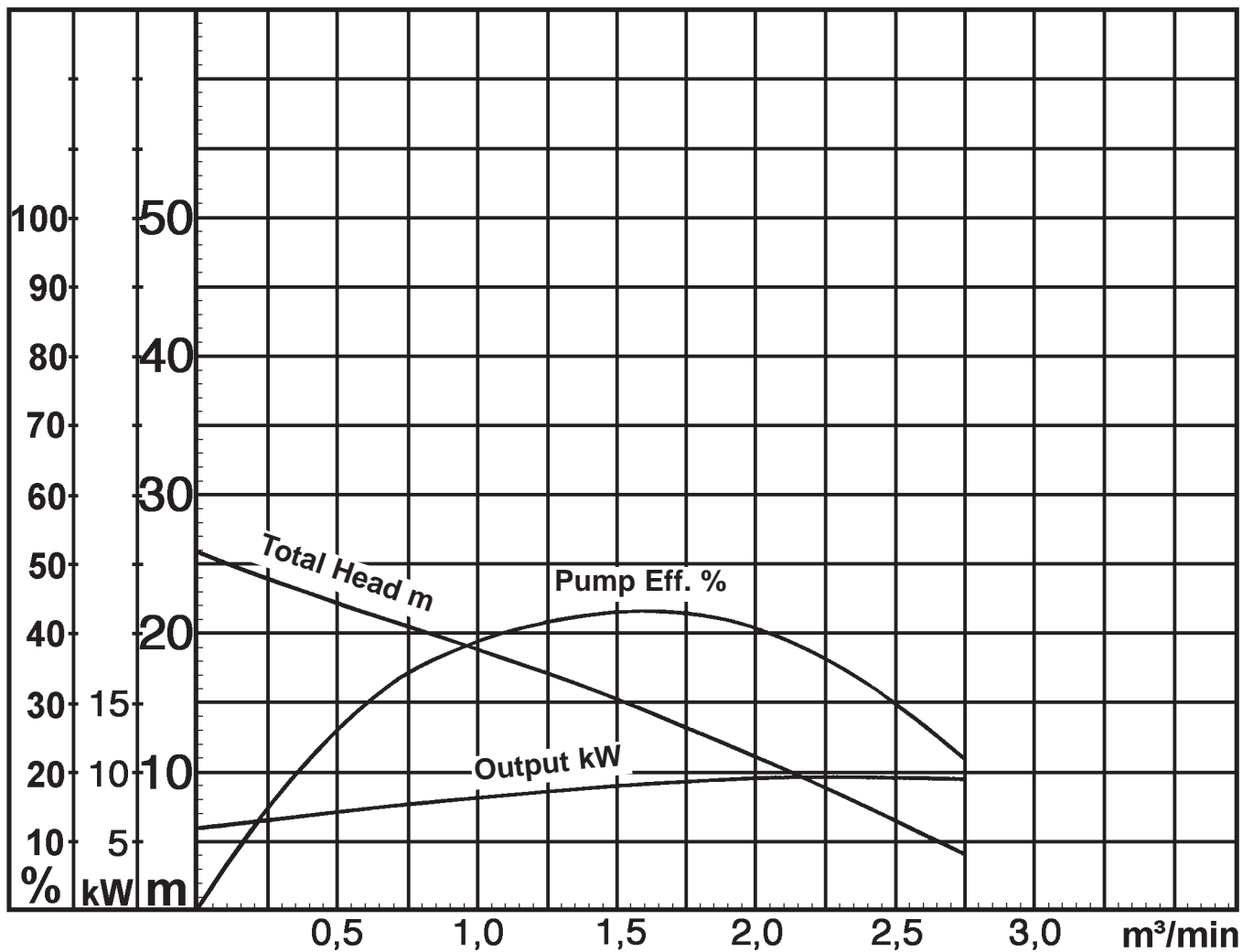
TOS100C411-52

No.	Description	Qty.	Remarks	No.	Description	Qty.	Remarks
1	Cable	3	H07RN-F / 2PNCT-F	55	Rotor	1	
6	Stuffing Box	1	FC200 (EN-GJL-200)	56	Stator	1	
20	Pump Casing	1	FC200 (EN-GJL-200)	60	Bearing Housing	1	FC200 (EN-GJL-200)
21	Impeller	1	FC200 (EN-GJL-200)+Tungsten Carbide	64	Motor Frame	1	FC200 (EN-GJL-200)
22	Suction Cover	1	FCD700 (EN-GJS-700-2)	72	Eye Bolt	2	SS400 (DIN 1.0040)
25	Mechanical Seal	1	H-40	91	Duck Foot Bend	1	FC200 (EN-GJL-200)
26	Oil Seal	1	TC-709212	92	Guide Pipe (Option)	2	Carbon Steel Pipe SGPW
29	Oil Casing	1	FC200 (EN-GJL-200)	93	Guide Hook	1	FCD450 (EN-GJS-450-10)
35	Oil Plug	2	SUS304 (EN-X5CrNi18-10)	94	Guide Support	1	FCD450 (EN-GJS-450-10)
36	Lubricant		Turbine Oil (ISO VG32)	95	Chain	1	SS400 (DIN 1.0040)
46	Air Release Valve	1	Nylon				
50	Motor Bracket	1	FC200 (EN-GJL-200)				
52A	Upper Bearing	1	6306ZZC3				
52B	Lower Bearing	1	6310ZZD2C3				
53	Motor Protector	1					
54	Shaft	1	SUS403 (EN-X6Cr13)				

Pump Performance Curve

100C411-52

Discharge Bore	100 mm
Total Head	20,0 m
Capacity	0,80 m ³ /min
Motor Output	11,0 kW
Motor Input	13,6 kW
Phase	3
Voltage	400 V
Frequency	50 Hz
Rated Current	23,8 A
Starting Current	128,0 A
Poles	4
Revolution	S.S. 1445 r.p.m.
Starting Method	star-delta
Insulation Class	F



100C411-52