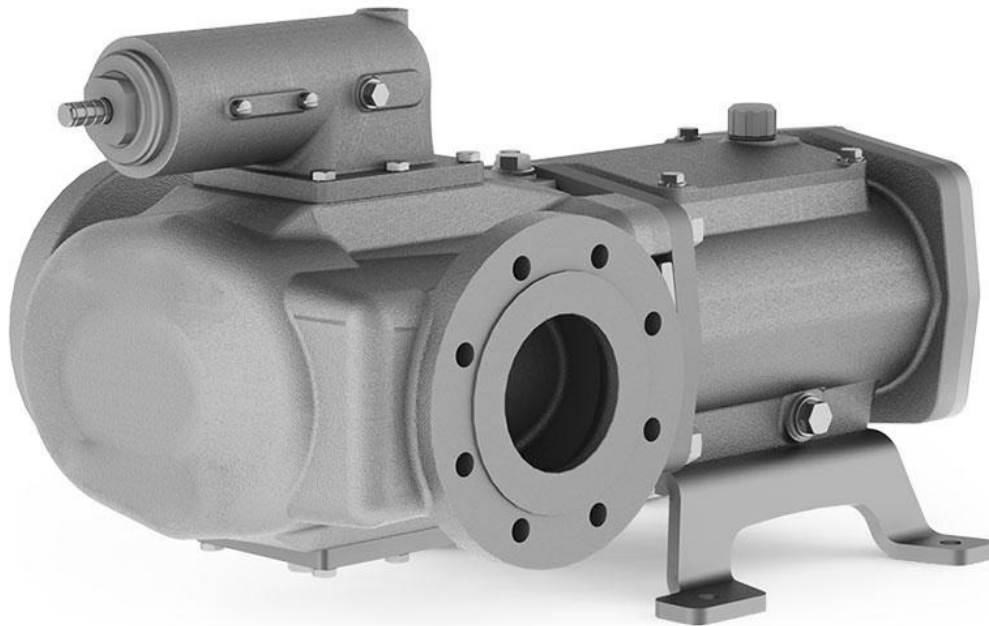


[Home](#)[Products](#)[Applications](#)[Company](#)[Contact](#)[- VPSI](#)

VPSI

The inline version of the VPS, known as the VPSI, is particularly easy to install. Its cast pump housing in different materials means that it can be easily integrated into pipelines without any offset. Individual components and wearing parts are easy to replace. The single flow pump technology is available in three sizes and is suitable even for smaller flow rates.

The advantages at a glance

VPSI figures:

[Privacy & Cookies Policy](#)

- Conveying elements run contact-free which means abrasion-free and safe to run dry
- Stable characteristic curve in the event of changing operating parameters, even with low flow rates
- Trouble-free transport of low to highly viscous products (e.g. ethanol at 0.6 mm²/s or asphalt at 74,000 mm²/s)
- Pressure and suction without changing pumps, suction performance up to 1-1.5 NPSHa
- Gentle, virtually pulsation-free liquid transport without crushing or turbulence
- Designs available in a wide variety of material combinations, in compact size, ATEX or TA Luft [Technical Instructions on Air Quality Control]
- It is possible to use an integrated circulation valve to protect both the pump and the piping.

Flow rate:	up to 180 m ³ /h
Suction pressure:	up to -0,75 bar
Differential pressure:	max. bis zu 25 bar
Viscosity:	0,5-100.000 mm ² /s

Feel free to contact us!

© 2020 VPS Pumpen / Fristam Pumpen Schaumburg GmbH

[Privacy notice](#) [Imprint](#)

[Privacy & Cookies Policy](#)