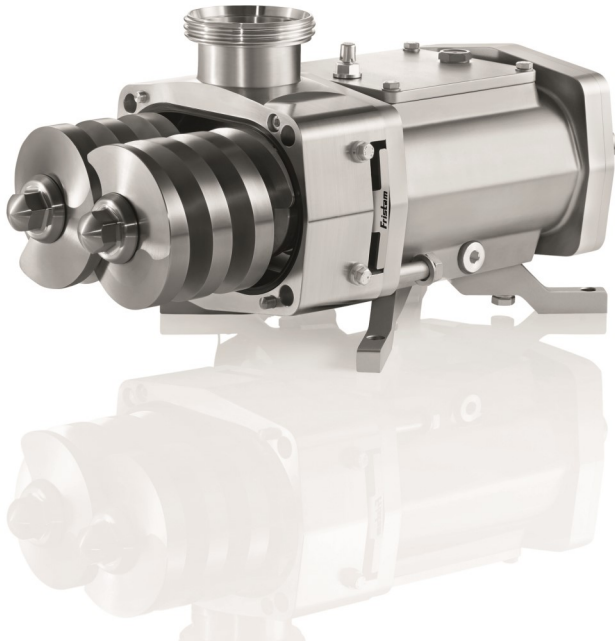


# **Consolidated Pumps Ltd.**

**Est. 1972**

HYGENIC PRODUCTS BROCHURE 2023



**[www.consolidatedpumps.com](http://www.consolidatedpumps.com)**

**TEL: +3531 4593471**

**[Info@consolidatedpumps.com](mailto:Info@consolidatedpumps.com)**



**NSAI**



QUALITY  
ISO 9001:2015  
NSAI Certified

# **Consolidated Pumps Ltd.**



# **Consolidated Pumps Ltd.**

## **FRISTAM FP** CENTRIFUGAL PUMP

Tried and tested a thousand times in the most varied applications throughout the hygienic process industry.

All 14 models of the FP series can be used universally, ensuring gentle product handling. They are robust, low-maintenance, durable and economical.



## **FRISTAM FPH** CENTRIFUGAL PUMP

The Fristam FPH features specific advantages for high-pressure applications up to 80 bar. It can therefore also be used as a booster pump in filtration technology.

It is hygienic, gentle, exceptionally low-maintenance, durable, highly economical and, due to its heavy-duty components, very robust.

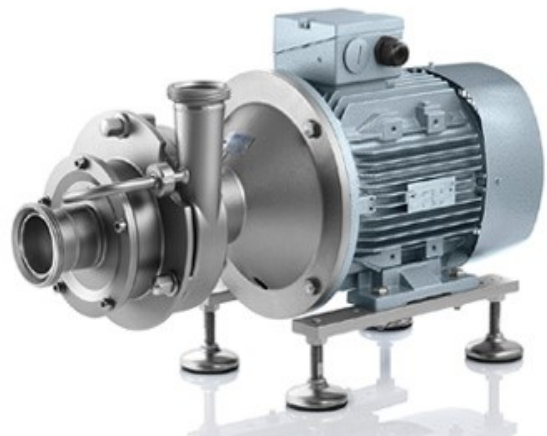


## **FRISTAM FPC** CENTRIFUGAL PUMP

This newly designed pump offers superior performance with gaseous liquids and in CIP-return applications.

It combines Fristam's proven impeller with a rotor screw. This clever design results in a low-noise hybrid that very efficiently pumps liquids with a significant gas content.

The FPC is also suitable for emptying tanks.



# **Consolidated Pumps Ltd.**

## **FRISTAM FDS**

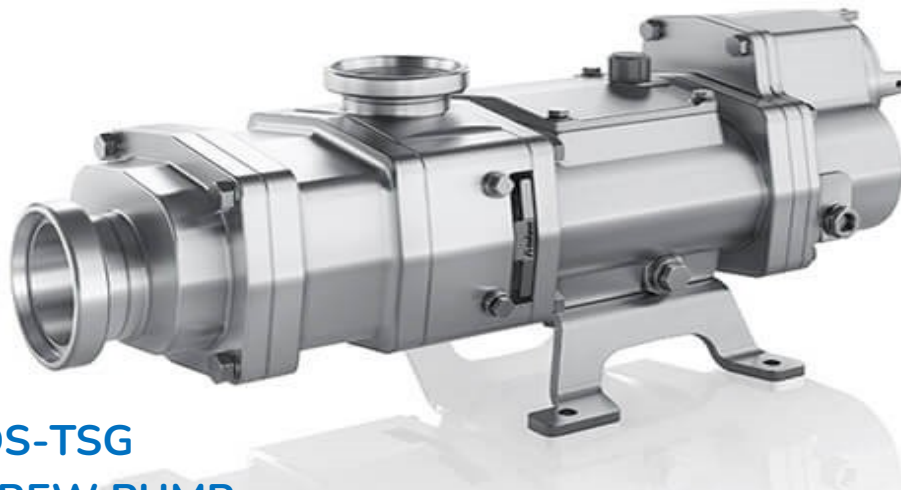
### **SPECIFIC CONSTRUCTION**

The Fristam FDS combines all the advantages of double-screw technology with our company's traditionally high quality standards. This positive displacement pump is ideal for the most viscous products whilst also being capable of reaching higher speeds of up to 3,600 min<sup>-1</sup>. Consequently, it can transport significant amounts of any low-viscosity medium, for example water or detergent solution.

This renders the use of an additional pump for cleaning processes obsolete.

### **TECHNICAL DETAILS**

- For high and low viscosities
- Incredible pressure and suction
- For production and CIP
- Maximum hygiene including aseptic
- Maximum application flexibility
- Easy maintenance and repair



## **FRISTAM FDS-TSG DOUBLE SCREW PUMP**

Our twin screw pump offers a wide speed envelope and consequently a wide range of flow rates. Now for the first time this feature is available in its entirety with the TSG option.

This special series is capable of pumping both, small amounts of the most viscous products such as candy paste, as well as high flows of CIP liquids.

Its unique gearbox unlocks the FDS series' full potential and makes the TSG ideal for production facilities with a wide range of flow rates.



# **Consolidated Pumps Ltd.**

## **FRISTAM FZ CENTRIFUGAL PUMP**

A reversible, self-priming pump that offers exceptional precision for the complete evacuation of tanks and lines. The FZ is characterised by its impressive performance when pumping highly viscous products.

It is ideal for CIP return applications and is the optimum solution whenever high suction capacity is required.



## **FRISTAM PM / PMV POWDER MIXER**

The solution to almost any problem when mixing powders and liquids.

Fristam Powder Mixers are specifically designed for dissolving, emulsifying and homogenising dry and wet ingredients into fluids.

They achieve perfect, homogeneous and smooth textures, are hygienic, extremely efficient and economical. They are also fully capable of CIP and SIP.



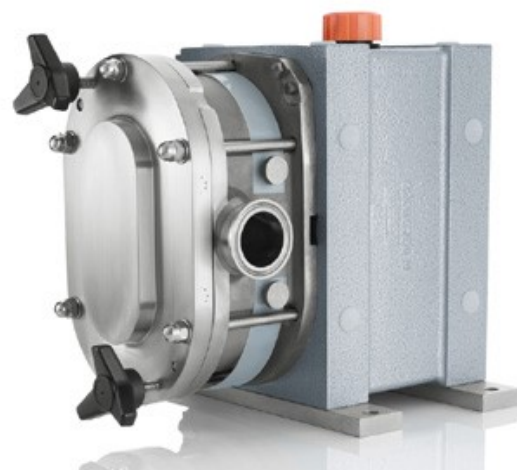
# **Consolidated Pumps Ltd.**

## **FRISTAM FKL POSITIVE DISPLACEMENT PUMP**

With its perfectly balanced rotor, the FKL is ideally suited for operation at high differential pressures.

It is specifically designed to endure pressure peaks.

The Fristam FKL series is suitable for high flow rates of up to 120 m<sup>3</sup>/h, as well as for CIP and SIP.



## **FRISTAM FL / FL3 POSITIVE DISPLACEMENT PUMPS**

The FL is universally suitable for many standard applications. It is hygienic, gentle, low-maintenance, durable and economical.

The Fristam FL3 features unique helical three-winged rotors and is specifically designed for revolution speeds of up to 1,000 min<sup>-1</sup> as well as for CIP return processes. This saves you an additional pump in a bypass line.



# **Consolidated Pumps Ltd.**

## **FRISTAM GENUINE SPARE PARTS**

At Consolidated Pumps Ltd we offer an extensive range of genuine Fristam spare parts manufactured as per the original pump specification as designed by Fristam for your company`s hygienic applications.

All spare parts can be supplied with material and polish certification as per the original design if requested.



# **Consolidated Pumps Ltd**



## FLOW:

1 m<sup>3</sup>/h = 0.278 l/s

1 l/s = 3.6 m<sup>3</sup>/h

1 m<sup>3</sup>/h = 16.667 l/min

1 l/min = 0.06 m<sup>3</sup>/h

1 m<sup>3</sup>/h = 3.67 UK gal/min

1 UK gal/min = 0.273 m<sup>3</sup>/h

1 m<sup>3</sup>/h = 4.403 US gal/min

1 US gal/min = 0.227 m<sup>3</sup>/h

1 ft<sup>3</sup>/s = 102 m<sup>3</sup>/h

## PRESSURE:

1 bar = 10.20 mH<sub>2</sub>O

1 mH<sub>2</sub>O = 0.098 bar

1 bar = 33.50 ft H<sub>2</sub>O

1 ft H<sub>2</sub>O = 0.0299 bar

1 bar = 14.5 p.s.i

1 p.s.i = 0.06895 bar

1 bar = 10<sup>5</sup> Pa

1 Pa = 10<sup>-5</sup> bar

1 bar = 10<sup>5</sup> N/m<sup>2</sup>

**Est. 1972**

Thank you for your  
support

**[www.consolidatedpumps.com](http://www.consolidatedpumps.com)**

**TEL: +3531 4593471**

**[Info@consolidatedpumps.com](mailto:Info@consolidatedpumps.com)**

