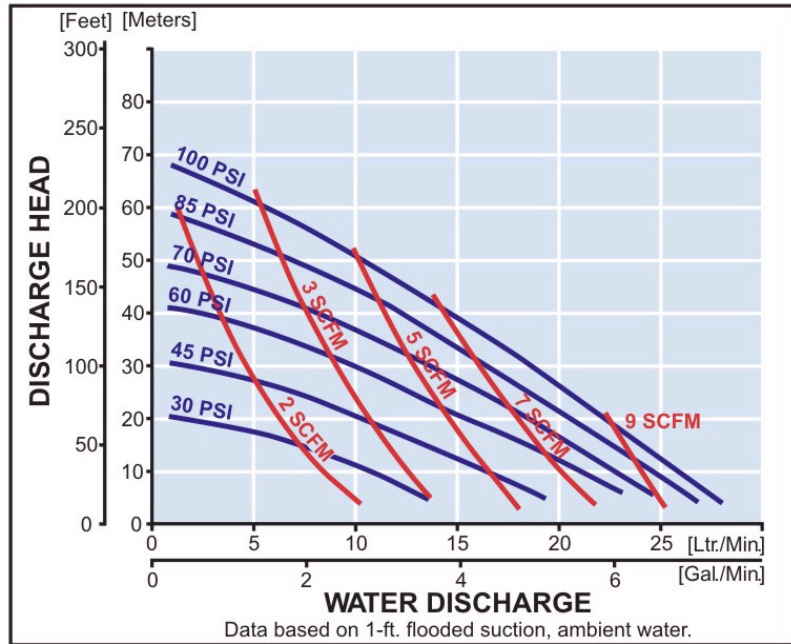
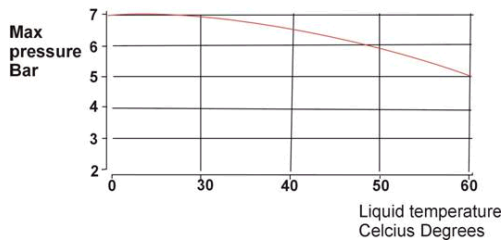
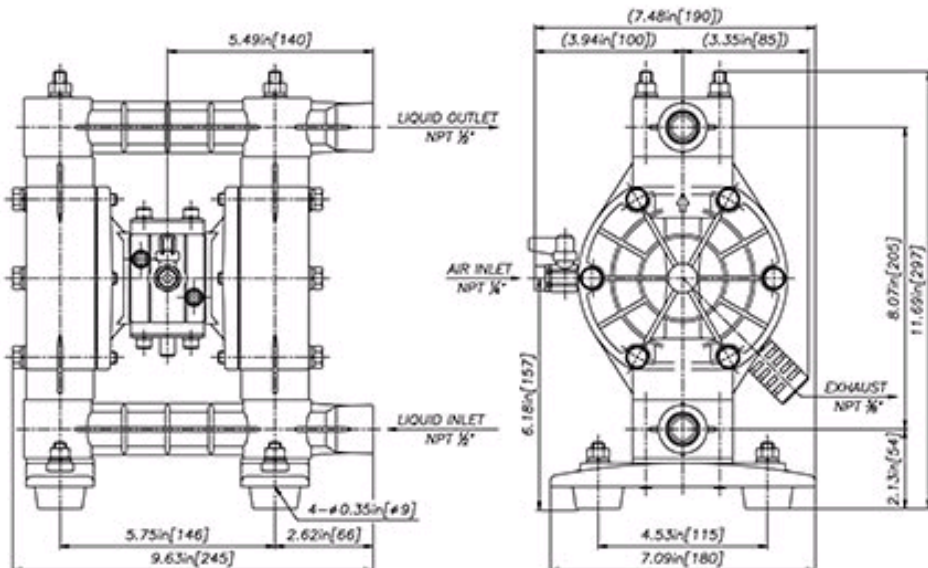


Max pressure vs temperature



TECHNICAL DATA				Pump type DP-15BP.	
Air supply pressure	0,2-0,7	MPa	Max. viscosity (neg. suc.)	3.000	Cp
Discharge volume/cycle	93	Cc	Max. viscosity (pos. suc.)	5.000	Cp
Max. discharge volume	28	L/min	Max. air consumption	290	NL/min
Max. discharge pressure	0,7	MPa	Max. noise level	82	dB(a)
Max. size of solids	1	mm	Operating temp. ambient	70	°C
Max. suction lift dry	T	1,5	Operating temp. fluid		
Max. suction lift wet	T	4,5		CR/NBR	82 °C
Max. suction lift dry	R	2,5		EPDM/TPO/PTFE	82 °C
Max. suction lift wet	R	5,5		TPEE/FPM	82 °C
Max. liq inlet pressure	T	0,03	MPa	Weight	type P
Max. liq inlet pressure	R	0,1	MPa	Weight	type
Caution! Data based on water (1 Cp)					



DP PUMPS REQUIRE A FRL UNIT TO LUBRICATE THE COMPRESSED AIR

FRL-2

